

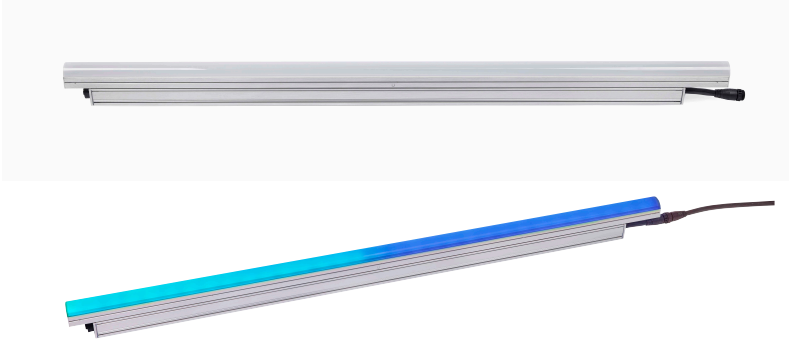
# EXTERIOR LINEAR PRO DV QUAD

OUTDOOR LINEAR DIRECT VIEW FIXTURE WITH COLOR BOOSTING TECHNOLOGY AND FINE SEGMENT CONTROL

SPEC SHEET

## HIGHLIGHTS

- Color-calibrated Quad color LEDs (8 LEDs/ft)
- Homogenous color mixing
- Round diffuser for soft appearance and extended viewing angle
- Selectable segment modes
- Selectable power consumption and integrated multi-range power supply unit for long fixture runs
- Hybrid power and data connector for easy daisy-chained configurations
- Rugged IP66 housing designed for permanent outdoor installations
- Low weight - 0.8 kg/ft (1.9 lbs/ft)
- Compact design - 40mm (1.57 inch) width



## OVERVIEW

Martin Exterior Linear Pro DV QUAD fixtures are compact, LED-based architectural fixtures, available in 1 and 4 foot lengths, making them easier to integrate into architectural elements. They are specifically designed for direct view applications and are equipped with a round diffuser for low resolution content, making them ideal for highlighting linear structures in permanent indoor/outdoor locations, emphasizing architectural features in stadiums, bridges, tunnels and other applications.

## KEY MESSAGES

### EASE OF INSTALLATION

The slim design and low weight makes them easier to integrate into architectural elements discreetly and with less structural requirements. They have flexible change-of-beam angles for late design changes and on-site adjustments. A smart mounting plate design offers a variety of standard or custom bracket solutions.

### SOPHISTICATED COLOR CONTROL

These QUAD color fixtures include logic RGB control of the RGBW engine, making it easier to mix colors when the white color is automatically calculated. Factory calibration of colors offers superior consistency and user-selectable default color temperature with the ability to set a favorite default color temperature. Fine segment control is also included for more organic and subtle color transitions.

### SMART INFRASTRUCTURE

Fixtures are DMX-controllable and easy to install due to their integrated universal power supply. They can also be daisy-chained using a combined power and data connector, which enables long fixture runs and more simple infrastructures.

### PREMIXED COLORS WITH COLOR BOOST

QUAD color LEDs deliver an enhanced visual appearance with homogenous color mixing and high lumen output of mixed colors. A color boosting feature is also included for full powered illumination of a single color or mixed colors, making them up to three times brighter than comparable fixtures yet boasting lower total power consumption.

### EFFICIENT OPERATION

With more than 50 lm/W, Exterior Linear Pro QUAD fixtures are highly efficient. Multiple power modes (12W/10W/5W, including ASHRAE compliance) can be set via Remote Device Management (RDM) to reduce power consumption as needed.

### GRANULAR LIGHTING CONTROL

An integrated 6-inch (15 cm) segment mode enables more granular lighting control for organic and subtle looks.

# EXTERIOR LINEAR PRO DV QUAD

OUTDOOR LINEAR DIRECT VIEW FIXTURE WITH COLOR BOOSTING TECHNOLOGY AND FINE SEGMENT CONTROL

SPEC SHEET

## FEATURES

- Color-calibrated Quad color LEDs (8 LEDs/ft)
- Homogenous color mixing
- Round diffuser for soft appearance and extended viewing angle
- Dedicated color temperature control channel
- Selectable segment modes (1, 4 or 8 segments)
- Selectable power consumption (12W/10W/5W) per foot
- Integrated multi-range power supply unit (PSU) 100-277V for long fixture runs
- Hybrid power and data connector for easy daisy-chained configurations
- DMX and RDM control
- Integrated magnetic switch for local diagnostics
- Rugged IP66 housing designed for permanent outdoor installations
- Low weight 0.8 kg/ft (1.9 lbs/ft)
- Compact design - 40mm (1.57 inch) width



End Termination Cap



Power Cable 10m



Power Cable 1m

## ORDERING INFORMATION

- Exterior Linear Pro DV QUAD 1ft.....P/N MAR-90570002
- Exterior Linear Pro DV QUAD 4ft.....P/N MAR-90570005

### RELATED ITEMS

- Martin Companion Cable.....P/N MAR-91616091
- Martin Companion Cable  
(for firmware update over DMX): ..... Free download from  
[www.martin.com](http://www.martin.com)

### ACCESSORIES

- Glare shield, EL Pro 1ft set of 4.....P/N MAR-90570022
- Glare shield, EL Pro, 4ft set of 4.....P/N MAR-90570023
- Adjustable bracket EL Pro 10 pcs .....P/N MAR-90570025
- Flange bracket EL Pro 10 pcs .....P/N MAR-90570026
- Quick mount bracket EL Pro 10 pcs.....P/N MAR-90570027
- Junction Box Power DMX to PD .....P/N MAR-91700019
- Power DMX Cable PD PD 0.2M EU .....P/N MAR-91700004
- Power DMX Cable PD PD 1M EU .....P/N MAR-91700005
- Power DMX Cable PD PD 2.5M EU .....P/N MAR-91700006
- Power DMX Cable PD PD 5M EU .....P/N MAR-91700007
- Power DMX Cable PD PD 10M EU .....P/N MAR-91700008
- Power DMX Cable 100M Roll EU .....P/N MAR-91700009
- Power DMX Cable PD PD 0.2M US .....P/N MAR-91700010
- Power DMX Cable PD PD 1M US .....P/N MAR-91700011
- Power DMX Cable PD PD 2.5M US .....P/N MAR-91700012
- Power DMX Cable PD PD 5M US .....P/N MAR-91700013
- Power DMX Cable PD PD 10M US .....P/N MAR-91700014
- End termination cap PD.....P/N MAR-91700015
- Power DMX Cable 100M Roll US .....P/N MAR-91700016
- Bulk connector PD female..... P/N MAR-91700017
- Bulk connector PD male .....P/N MAR-91700018

# EXTERIOR LINEAR PRO DV QUAD

OUTDOOR LINEAR DIRECT VIEW FIXTURE WITH COLOR BOOSTING TECHNOLOGY AND FINE SEGMENT CONTROL

SPEC SHEET

## TECHNICAL SPECIFICATIONS

### DYNAMIC EFFECTS

|                       |  |
|-----------------------|--|
| Intensity .....       | 0 - 100%                                 |
| Color mixing .....    | RGB (white is calculated automatically)  |
| Segment Control ..... | 0.5ft, 1 ft or full 4 ft fixture control |

### CONTROL AND PROGRAMMING

|                          |  |
|--------------------------|--|
| Control systems.....     | DMX, RDM   |
| Stand-alone control..... | Up to 20 scenes with individual fade/hold times            |
| Control resolution ..... | 8-bit DMX individual color control                         |
| Dimmer resolution .....  | 16-bit DMX control of intensity                            |
| DMX channels 4ft.....    | 6/4/3/12/24<br>(standard/RAW/1 seg/4 seg/8 seg)            |
| DMX channels 1ft.....    | 6/4/3/6 (standard/RAW/1 seg/2 seg)                         |
| User interface.....      | Magnetic button to call up fixture status and test fixture |
| DMX compliance.....      | USITT DMX512/1990  |
| RDM compliance.....      | ANSI/ESTA E1.20  |

### OPTICS

|                           |   |
|---------------------------|---|
| Light source.....         | QUAD color LED (8 LEDs per foot)                      |
| Minimum LED lifetime..... | 50 000 hours (to >70% luminous output)*               |
| Viewing angle.....        | 180°  |
| Binning.....              | Tight color and flux binning                          |
| Calibration.....          | Full Gamut Color Calibration (1 step MacAdam ellipse) |

\*Figure obtained under manufacturer's test conditions

### PHOTOMETRICS

|                                   |                                |
|-----------------------------------|--------------------------------|
| CRI (Color Rendering Index) ..... | >70                            |
| CCT.....                          | 2000K – 11000K (default 4000K) |

|                       |             |              |
|-----------------------|-------------|--------------|
| Luminous output ..... | 1 FT at 12W | 4 FT at 12W  |
| FULL.....             | 450 lumens  | 1800 lumens  |
| RED .....             | 200 lumens  | 800 lumens   |
| GREEN.....            | 400 lumens  | 16000 lumens |
| BLUE .....            | 80 lumens   | 360 lumens   |

\*All Photometric Data measured in steady state (30 minutes warm-up time) at 25°C ambient.

### CONSTRUCTION

|                                     |   |
|-------------------------------------|---|
| Housing.....                        | Aluminum  |
| Finish .....                        | Clear anodized (standard) or optional colors on request                                       |
| Front.....                          | Clear polycarbonate   |
| Effective Projected Area (EPA)..... | 0.04 m <sup>2</sup> per ft  |
| Protection rating.....              | IP66  |
| IK rating .....                     | IK08  |
| Corrosion resistance.....           | C5 High (ISO 12944-6)   |
| Vibration resistance .....          | 1.0g, Sinusoidal (IEC 60068-2-6),<br>0.7g RMS Random (IEC 60068-2-64),<br>3.0g (ANSI C136-31) |

### INSTALLATION

|  |                 |
|--|-----------------|
| Orientation.....                               | Any             |
| Minimum distance to illuminated surfaces ..... | 0.1 m / 0.3 ft. |

### ELECTRICAL

|   |  |
|---|--|
| Power/data in/thru.....                               | 8-pin custom connectors  |
| AC power.....   | 100-277 V nominal, 50/60 Hz  |
| Power supply unit.....                                | Auto-ranging electronic switch-mode  |
| Idle power consumption.....                           | 1ft length: 1.54 W, 4ft length: 2.30W (steady state, all LEDs at zero intensity) |
| Max earth leakage.....                                | 1ft length: 0.15 mA, 4ft length: 0.21 mA   |
| Surge protection.....                                 | 4KV  |
| Maximum connected 4ft fixtures* .....                 | 42 pcs (52 m / 169 ft) @ 230V-277V   |
| Maximum total string length (cable + fixtures)* ..... | 150 m / 328 ft   |
| Typical half-cycle RMS inrush current ..              | 0.35 A   |

\* Refer to system diagram for details on fixture run limitations

### TYPICAL POWER AND CURRENT

**12W mode:**  
100-240 V, 50/60 Hz: 12 W per foot +/- 1 W, PF 0.95 +/- 0.05  
277 V, 50/60 Hz: 12 W per foot +/- 1 W, PF 0.90 +/- 0.05

**10W mode:**  
100-240 V, 50/60 Hz: 10 W per foot +/- 1 W, PF 0.95 +/- 0.05  
277 V, 50/60 Hz: 10 W per foot +/- 1 W, PF 0.90 +/- 0.05

**5W mode:**  
100-240 V, 50/60 Hz: 5 W per foot +/- 0.5W, PF 0.90 +/- 0.05  
277 V, 50/60 Hz: 5 W per foot +/- 0.5W, PF 0.70 +/- 0.05

Power figures are typical, not maximum. Measurements made at nominal voltage. Allow for +/- 10% deviation. PF = Power factor.

### THERMAL

|  |                     |
|--|---------------------|
| Cooling.....                                       | Convection          |
| Maximum ambient temperature.....                   | 45° C (113° F)*     |
| Minimum ambient temperature.....                   | -30° C (-22° F)     |
| Total heat dissipation (calculated, +/- 10%) ..... | 41 BTU/hr. per foot |

\*Above this temperature, the fixture regulates output to protect from overheating

### APPROVALS

|                                     |   |
|-------------------------------------|---|
| EU Safety.....                      | EN 60598-2-5 (EN 60598-1), EN 62471, EN 62493                     |
| EU EMC .....                        | EN 55015, EN 55032, EN55035, EN 61547, EN 61000-3-2, EN 61000-3-3 |
| US Safety.....                      | ANSI/UL 1598  |
| US EMC .....                        | 47 CFR Part 15 Class B  |
| Canadian Safety.....                | CSA C22.2 No. 250.0   |
| Australia/NZ .....                  | RCM   |
| Global CB Certification/IECEE ..... | IEC 60598-2-5 (IEC 60598-1)                                       |
| India .....                         | BIS IS 10322[Part5/section5]                                      |

# EXTERIOR LINEAR PRO DV QUAD

OUTDOOR LINEAR DIRECT VIEW FIXTURE WITH COLOR BOOSTING TECHNOLOGY AND FINE SEGMENT CONTROL

SPEC SHEET

## TECHNICAL SPECIFICATIONS

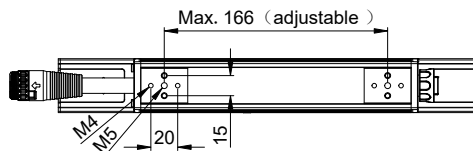
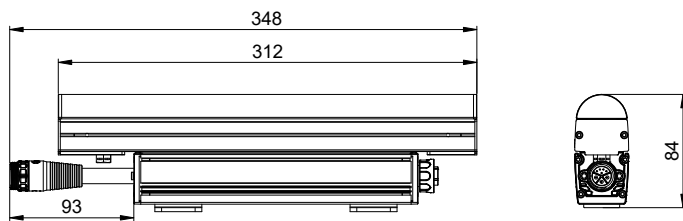
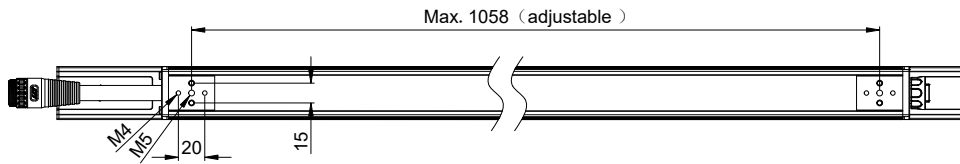
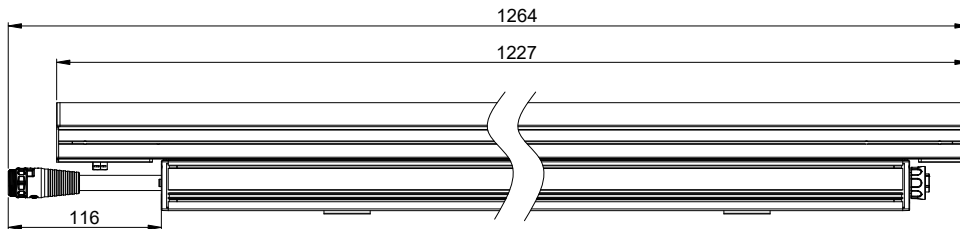
### ENVIRONMENTAL

|                      |                                     |
|----------------------|-------------------------------------|
| RoHS .....           | Compliant                           |
| REACH .....          | Compliant                           |
| WEEE .....           | Compliant                           |
| Proposition 65 ..... | Compliant                           |
| FSC .....            | Cardboard inlay and outer packaging |

## DIMENSIONS

### PHYSICAL

|                             |                    |
|-----------------------------|--------------------|
| Length - 1 ft Version ..... | 312mm (1 ft)       |
| Length - 4 ft Version ..... | 1227mm (4 ft)      |
| Width .....                 | 40 mm (1.57 inch.) |
| Height .....                | 84 mm (3.31 inch.) |
| Weight - 1 ft Version ..... | 0.85 kg ( 1.9 lbs) |
| Weight - 4 ft Version ..... | 2.8 kg (6.2 lbs)   |



*Brackets must be ordered separately  
All measurements in mm*