

DMX Dimmer 55W version

cod. SPTD7055-WW	3000K
cod. SPTD7055-NW	4000K
cod. SPTD7055-W	5700K

FEATURES:

- 230 V ac 50Hz, 55W
- 55W interchangeable LED Module
- Color temperature 3000 K, 4000 K and 5700 K
- CRI>90
- DMX 512 control + RDM function
- 1 DMX Channel
- Adjustable zoom from 7° to 48°
- Manual zoom
- Linear dimmer 5-100%
- DMX dimmer
- Digital display
- Control connections, Neutrik XLR 5P In&Out
- Power connections, Cable
- Heatsink with low noise fan, max 8 dB
- Filter frame included
- Barndoor 4 leaves optional
- Aluminium and steel plate body. Scratch resistant epoxy powder paint
- IP20
- Insulation class I
- Suitable to be fitted on normally inflammable surfaces



Available
in different body colors

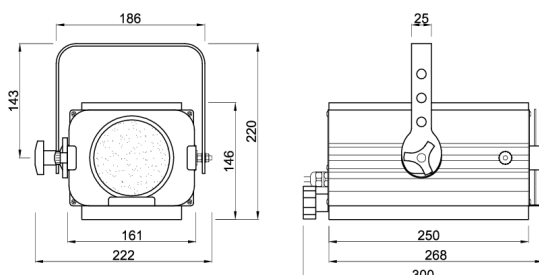


Replaceable LED module high efficiency, long life, available in three different temperatures of white, 3000K, 4000K and 5700K, high CRI> 90, manually adjustable zoom 7° to 48°.

Dimmable through DMX signal.

More performance than a 300W tungsten lamp with only 55W LED source.

The master dimmer has a soft and continuous adjustment from 5 to 100%.



Barndoor
cod. PR8060