



## BARIO 55 LED Manual Dim



### CODES

#### PRF-0501935B-WW

Temp. Col. 3000 K - Manual dimmer

#### PRF-0501935B-NW

Temp. Col. 4000 K - Manual dimmer

Bario LED is a compact profile spot with zoom lens. The COB LED light source has the latest technology. Available in 2 color temperatures: 3000K and 4000K. Suitable for museums, theaters and television studios. Adjustment of the light beam and focusing are achieved by sliding the lenses. The projection can be shaped using 4 shutter blades. Bario LED provides iris diaphragm and gobo holders for image projection as optional.

Compact LED zoom profile spot with precision optics. COB LED source with high CRI. Body in extruded aluminum and steel, painted with scratch-resistant epoxy powders, white color.

Rectangular shaped fixture with adjustable fork for suspension mounting, side handle for swing. Optical manual zoom from 19° to 35° with manual focus. Four independent adjustable steel shutter blades for shaping the light beam. Available on request iris diaphragm and gobo holder (gobo size Ø 50mm, image size Ø 40mm).

Truss fixing by mechanical couplers, installable on the ceiling / wall by suitable fixing systems (not supplied), adapter for electrified track with three lines available on request.

Integrated switching power supply. Manual adjustment via potentiometer. Variable speed cooling fan set automatically according to the intensity of the light emitted.

### PHOTOMETRIC CHARACTERISTICS

**Source Type:** LED Citizen Cited COB

**Color Temperature:** 3000 K (WW) - 4000 K (NW)

**Color Filter:** Filter frame with spring clip for easy filter change

**Color Tolerance:** 2 MacAdam

**Light Source Yield:** 120 lm/W

**Color Rendering Index (CRI):** > 90

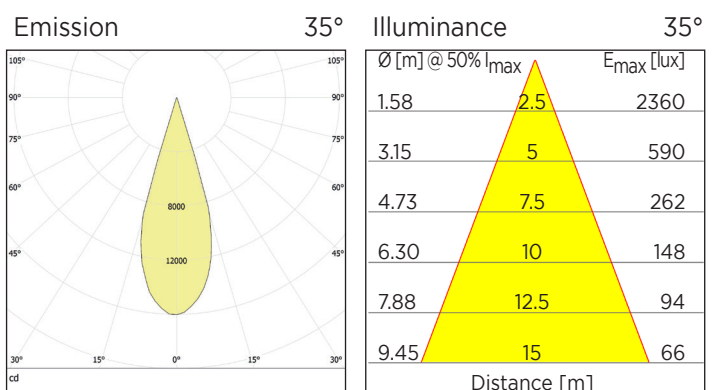
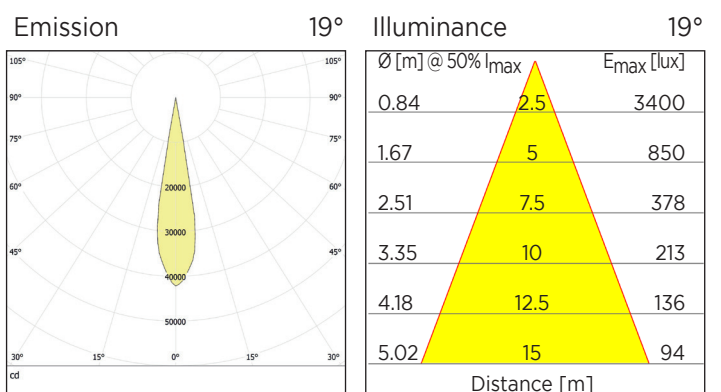
**Useful Light Expectation:** 50000 h

**Lumen Maintenance:** L80B20

**Luminaire Emission:** 4675 lm (WW) - 4890 lm (NW)

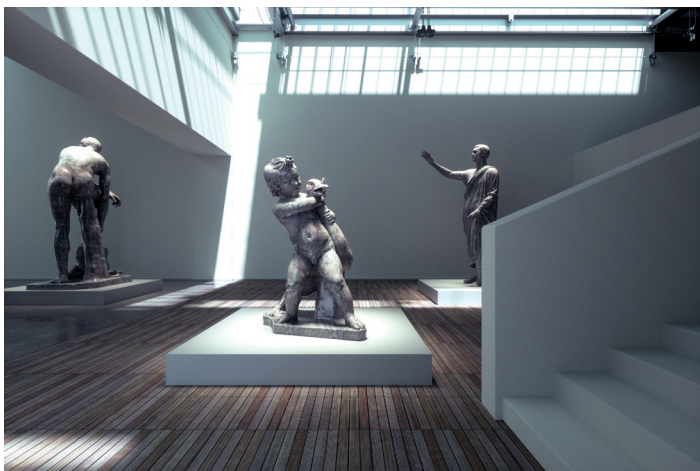
**Beam Aperture:** Zoom 19° ÷ 35°

**Photobiological Risk Class:** 0 - Exempt

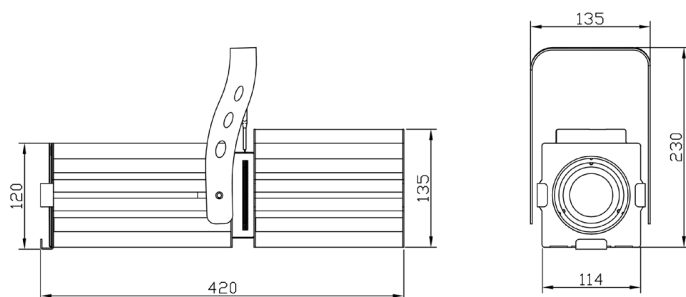


## ELECTRICAL CHARACTERISTICS

**Driver:** integrated  
**Power Supply:** 230 V ac, 50/60 Hz  
**Absorption:** 55W max  
**Socket:** Tripolar cable H05VV-F 3G1, length 1m  
**Insulation class:** I  
**Emergency Function:** no  
**Dimmable:** yes  
**Control Signal:** Manual via on-board knob  
**Performed Functions:** on/off - dimmer



## DIMENSIONS



## MECHANICAL CHARACTERISTICS

**Luminaire Color:** White  
**Optical System:** Optical two-lens zoom system, manual adjustment of the opening and focusing angle by means of knobs positioned in the lower part of the body  
**Adjustable Beam:** Light beam adjustable +/- 50° with respect to the horizontal, lateral knob for clamping the fork  
**Type of Installation:** Suspended / track mounted with adapter accessory  
**Walkable / Carriageable:** no  
**Flammable Surfaces:** Suitable to be installed on normally inflammable surfaces  
**Protection Rating:** IP20  
**Mechanical Resistance:** IK06  
**Dimensions:** 420 x 114 x 135 mm (body)  
**Weight:** 4.8 kg  
**Ambient Temperature Ta:** -10°C / +40°C  
**Reference Norms:** the product meets the requirements of:

- compliance with RoHS Directive 2011/65 / EU.
- electromagnetic compatibility in accordance with the EMC 2014/30 / EU and LVD 2014/35 / EU directives.
- photobiological compatibility according to EN 62471: 2010.

## ACCESSORIES

*Adapter for 3 lines track, code APL1443DB*  
*Iris diaphragm, code AC830*  
*Gobo holder (gobo size Ø 50mm, image size Ø 40mm), code AC050*  
*Color frame for additional gelatin, code AC190*  
*Aluminum coupler for Ø50mm frame truss max load 100kg , code AC299*  
*Safety chain length 75mm Ø6mm, code 904PR*

PRF-0501935B-en.pdf - Rev. 0 - 11/2019

Arena Luci Design s.r.l.  
via Svizzera 12/14 - 46042 Castel Goffredo (MN)  
Tel: +39 0376 782411 - Fax: +39 0376 780973  
www.arenaluci.it - info@arenaluci.it

Arenaluci