



BARIO 35 LED on/off



CODES

PRF-0351935B-WW

Temp. Col. 3000 K - on/off

PRF-0351935B-NW

Temp. Col. 4000 K - on/off

Bario LED is a compact profile spot with zoom lens. The LED light source has the latest technology. Available in 2 color temperatures: 3000K and 4000K. Suitable for museums, theaters and television studios. Adjustment of the light beam and focusing are achieved by sliding the lenses. The projection can be shaped using 4 shutter blades. Bario LED provides iris diaphragm and gobo holders for image projection as optional.

Compact LED zoom profile spot with precision optics. LED source with high CRI. Body in extruded aluminum and steel, painted with scratch-resistant epoxy powders, white color.

Rectangular shaped fixture with adjustable fork for suspension fixing, side handle for swinging. Optical manual zoom from 19° to 35° with manual focus. Four independent adjustable steel shutter blades for shaping the light beam. Available on request iris diaphragm and gobo holder (gobo size Ø 50mm, image size Ø 40mm).

Truss fixing by mechanical couplers, installable on the ceiling / wall by suitable fixing systems (not supplied), adapter for electrified track with three lines available on request.

Integrated switching power supply. Light intensity adjustment via optional external dimmer. Low-noise cooling fan.

PHOTOMETRIC CHARACTERISTICS

Source Type: LED Citizen Cited

Color Temperature: 3000 K (WW) - 4000 K (NW)

Color Filter: Filter frame with spring clip for easy filter change

Color Tolerance: 2 MacAdam

Light Source Yield: 120 lm/W

Color Rendering Index (CRI): > 90

Useful Light Expectation: 50000 h

Lumen Maintenance: L80B20

Number of Sources: 1

Rated Absorption: 230 Vrms, 33 W max

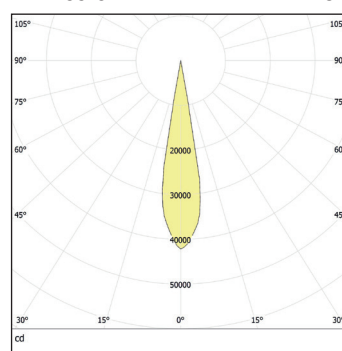
Luminaire Emission: 3300 lm (WW) - 3515 lm (NW)

Beam Aperture: Zoom 19° ÷ 35°

Photobiological Risk Class: 0 - Exempt

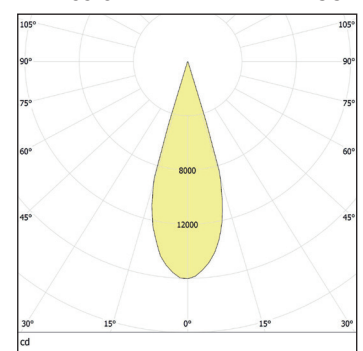
Emission

19°



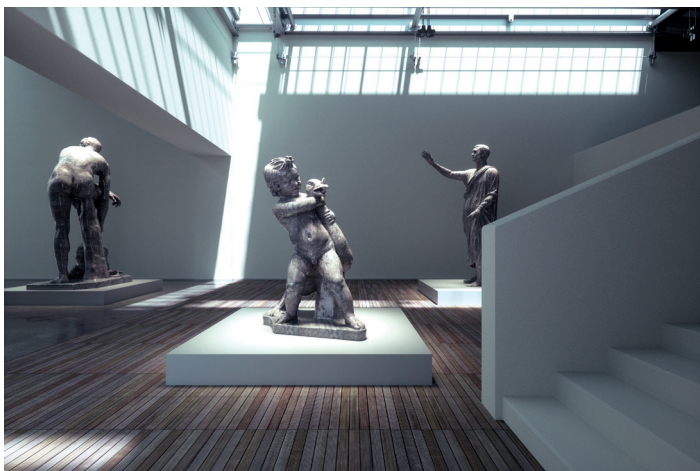
Emission

35°

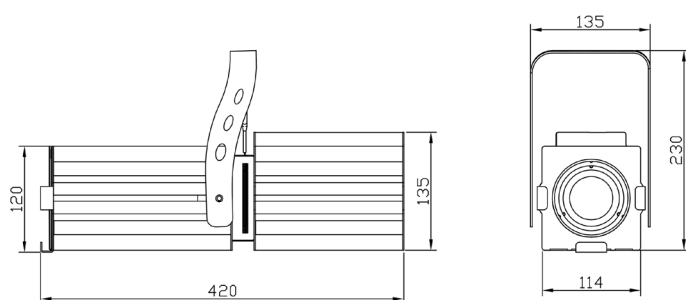


ELECTRICAL CHARACTERISTICS

Driver: integrated
Power Supply: 230 V ac, 50/60 Hz
Absorption: 35W max
Socket: Tripolar cable H05VV-F 3G1, length 1m
Insulation class: I
Emergency Function: no
Dimmable: yes
Control Signal: via Trailing Edge type external phase-cut dimmer (not included)
Performed Functions: on/off - dimmer (requires external accessory)



DIMENSIONS



MECHANICAL CHARACTERISTICS

Luminaire Color: White
Optical System: Optical two-lens zoom system, manual adjustment of the opening and focusing angle by means of knobs positioned in the lower part of the body
Adjustable Beam: Light beam adjustable +/- 50° with respect to the horizontal, lateral knob for clamping the fork
Type of Installation: Suspended / track mounted with adapter accessory
Walkable / Carriageable: no
Flammable Surfaces: Suitable to be installed on normally inflammable surfaces
Protection Rating: IP20
Mechanical Resistance: IK06
Dimensions: 420 x 114 x 135 mm (body)
Ambient Temperature Ta: -10°C / +40°C
Reference Norms: the product meets the requirements of:

- compliance with RoHS Directive 2011/65 / EU.
- electromagnetic compatibility in accordance with the EMC 2014/30 / EU and LVD 2014/35 / EU directives.
- photobiological compatibility according to EN 62471: 2010.

ACCESSORIES

Phase-cut push-button dimmer, code LCO440
Phase-cut push-button / Zigbee dimmer, code LC1019ZGSAC-HP
Adapter for 3 lines track, code APL1443DB
Iris diaphragm, code AC830
Gobo holder (gobo size Ø 50mm , image size Ø 40mm), code AC050
Color frame for additional gelatin, code AC190
Aluminum coupler for Ø50mm truss structure max load 100kg, code AC299
Safety chain length 75mm Ø6mm, code 904PR

PRF-0351935B-en.pdf - Rev. 0 - 11/2019

Arena Luci Design s.r.l.
via Svizzera 12/14 - 46042 Castel Goffredo (MN)
Tel: +39 0376 782411 - Fax: +39 0376 780973
www.arenaluci.it - info@arenaluci.it

 **Arenaluci**