

DAUS - 860

DAUS - 8 COLOURS LED 300W

Cyclight



- **Type:** Cyclight
- **Source:** 8 colours LED 300W
- **Optics:** Asymmetric

Spice up your light

Dalis is an asymmetrical 300W LED cyclorama / wall wash luminaire designed to deliver powerful, smooth coverage and a huge variety of pastel and saturated colours. Dalis cyclight offers silent operation which is perfect for sound sensitive applications like opera houses and studios, and all theatrical, TV and entertainment applications.

Features

- **8-colour mixing LED system:** red, Green, Blue, Royal Blue, Amber, Cyan, Warm White (2200K), Cool White (6500K)
- **Very wide colour gamut:** the choice of the eight colours in association with the 16-bit control, results in an almost infinite range of repeatable colour possibilities
- **Impressive range of pastel tones:** desaturation of the colours possible with the addition of the Warm White and Cool White LEDs - no need to dim the light output
- **True tunable white:** from 2200K to 6500K - full spectrum to light backdrop
- **16-bit control of each colour:** precision dimming on every colour
- **Linear dimming curve:** no colour fading during dimming
- **Adjustable response time:** choice of fast or slow dimming for tungsten-like simulation - adjustment by DMX protocol
- **Control of up to 4 groups:** colour variations with smooth transition by separating the unit into 2 or 4 sections
- **Strobe:** independent control of speed and duration
- **Easy control mode available:** preset calibrated colours with control of intensity and CCT
- **Ethernet-DMX node:** data IN through RJ45 connector; data OUT through DMX for daisy chaining
- **Universal data control:** compatible with DMX, RDM, Art-Net, sACN protocols
- **Remote setup:** all parameters can be adjusted by RDM protocol
- **Angular sensor:** tilt angle displayed for perfect alignment of all the units
- **Auto Flip Mode:** automatic flip over of the group sections depending on the positions of the unit for easy programming
- **Dimming parameters:** choice of square or linear dimming curves
- **Vertical mounting possible:** allows easy creation of vertical colour fades (horizontal lines) – for sunrise / sunset creations
- **Adjustable feet:** can be installed directly on the floor; simple retractable foot mechanism to aid floor focusing
- **QuickRig mounting system:** spigots can be positioned anywhere along the unit to clamp anywhere on truss or light bars

Optical

- **Exclusive patented optical system:** 48 micro optical asymmetric reflectors spreading the light evenly across vertical surfaces
- **High efficiency:** massive light output, small power consumption
- **Long life:** outstanding operational lifetime expectation, no need to replace lamps, low maintenance
- **Perfect white:** the combination of the 2 whites with the 6 colours enables to produce white variations with very high quality (CRI >97) and high brightness
- **High transmissive coated protective glass window:** ensures optimal light transmission
- **Directional light:** allows creation of accurate linear sections
- **Electronic dimmer:** dimming without clipping or cut-out at low intensity levels; high quality smoothing

Construction

- **Made in Europe:** control over all aspects of quality
- **PSU:** built-in electronic flicker-free power supply for easy, plug-and-play installation
- **Power connectors:** neutrik® powerCON TRUE1 TOP IN and OUT connectors for daisy chaining; delayed power out switching against inrush current
- **Fanless system:** convection cooling- perfect for sound sensitive applications - less maintenance required
- **Electronic thermal management system:** ensures maximum performance of the system without any risk of overheating
- **QuickRig safety cables:** easy and secure installation of the safety cable
- **Lightweight and compact:** easy to install in a row directly on the floor or hanged on lighting bar

Picture:860

DSEN241_860 - 05/06/2023

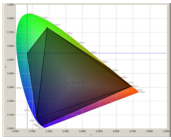
Robert Juliat reserves the right to change or alter any of the items detailed on this page, to increase or improve manufacturing techniques without prior notice.

Robert Juliat S.A.S., 32 rue de Beaumont, 60530 Fresnoy-en-Thelle - France
Telephone : +33 (0)3 44 26 51 89 - info@robertjuliat.fr - www.robertjuliat.com



ROBERT JULIAT

Source (Light quality report(s) available at the end of the document)



- **Lamp type:** LED - 8 colours
- **Power:** 275 W
- **Lumen output:** 20479 lm
- **Life:** 40000 hours

Colours	Power *	Lumen output*	Colour temperature*	CRI* (min)
Red	18 W	1 389 lm		
Green	26 W	2 000 lm		
Blue	26 W	700 lm		
Royal blue	26 W	3 846 lm		
Cyan	24 W	896 lm		
Amber	26 W	1 184 lm		
Warm white	65 W	3 984 lm	2200K	80
Cool white	65 W	6 480 lm	6500K	70

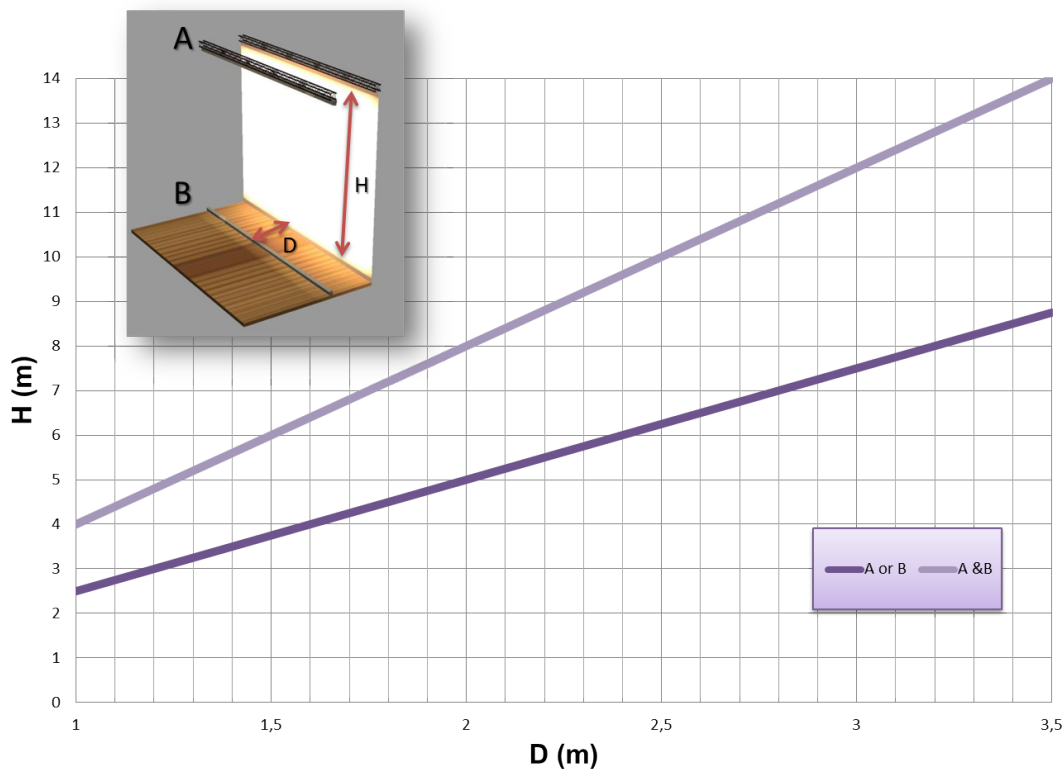
(*) manufacturer's data

Optics

Characteristics

- **Type:** Asymmetric
- **Horizontal spread:** °
- **Vertical spread:** 90°

Installation and photometrics



Field lumens
14 400 lm

Efficacy
50 lm/W

Recommended distances for the best evenness of light on cyclorama

Remote control

- **Data protocol:** USITT DMX512-A
RDM / Art-Net / sACN

- **Data IN connector:** 5 pins XLR mâle + etherCON RJ45
- **Data OUT connector** 5 pins XLR femelle



DMX chart:

Mode 1 (70 channels)

Dimmer @16b
Group1: 8 colours @16b
Group2: 8 colours @16b
Group3: 8 colours @16b
Group4: 8 colours @16b
Strobe: duration+speed
Response time
Control mode

Mode 2 (22 channels)

Dimmer @16b
8 colours @16b
Strobe: duration + speed
Response time
Control mode

Mode 3 (13 channels)

Dimmer @8b
8 colours @8b
Strobe: duration + speed
Response time
Control mode

Mode 4 (8 channels)

Dimmer @16b
Colour presets
CCT
Strobe: duration + speed
Response time
Control mode

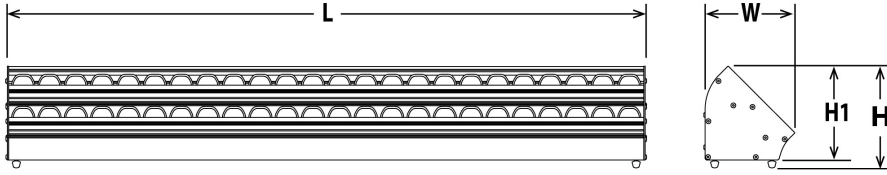
Mode 5 (7 channels)

Dimmer @8b
Colour presets
CCT
Strobe: duration + speed
Response time
Control mode

Mode 6 (72 channels)

Group1: dimmer @16b
Group1: 8 colours @16b
Group2: dimmer @16b
Group2: 8 colours @16b
Group3: dimmer @16b
Group3: 8 colours @16b
Group4: dimmer @16b
Group4: 8 colours @16b

Dimensions and weight



Weight: 11 kg (24.2 lbs)

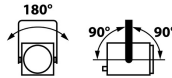
Height	Length	Width	Yoke	Tilt
H= 159 mm (6.3 in) H1= 147 mm (5.8 in)	L= 1005 mm (39.6 in)	W= 143 mm (5.6 in)		TU= 10° TD= 10°

Shipping

- **Weight :** 13 kg (28.6 lbs)
- **Volume :** .05 m³ (1.83 ft³)

Installation

- **Minimum distance to illuminated surface:** 0.2 m (0.7 ft)
- **Operating position:**



Construction

- **Housing:** Extruded aluminium
- **Colour:** Black
- **Cooling:** Convection cooling
- **Maximum ambient temperature (Ta):** 40°C (104°F)
- **Maximum case temperature (Tc):** 70°C (158°F)
- **Total heat dissipation:** 973 BTU/h
- **Ingress Protection (IP) rating:** IP20

Electrical compatibility

- 220/230 V - 50 Hz
- 245 V - 50 Hz
- 110/120 V - 60 Hz
- 208 V - 60 Hz
- 220/230 V - 60 Hz
- 100 V - 50 Hz
- 100 V - 60 Hz
- Selector: automatic detection

Power input



- **Type:** Neutrik powerCON TRUE1 TOP (connector included)

Power consumption

Voltage	Frequency	Current	Power	Power factor
230 V	50 Hz	1.3 A	285 W	0.96
120 V	60 Hz	2.5 A	290 W	0.99
100 V	60 Hz	3 A	295 W	0.99

Power Supply Unit

- **PSU:** Internal - Electronic PSU - Flicker free with PFC
- **Control:** Local / DMX
- **Protection:** -
- **Power thru:** Neutrik powerCON TRUE1 TOP - Maximum of 12 units (230 V) / 6 units (120 V)

Approvals




Warranty

- **Fixture: 3 years**
See General Sales Condition on website

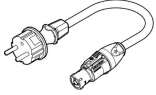

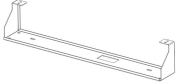
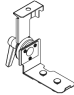
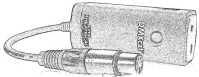



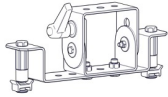

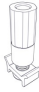

Model

860	8 colours LED 300W Cyclight - 860 Dalis
------------	---

Options

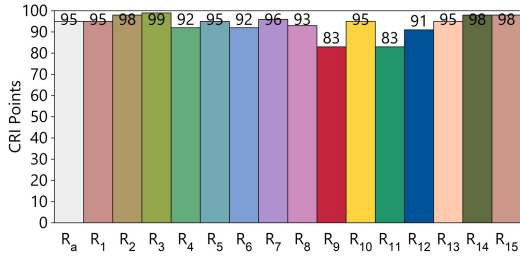
FC860	Flight-case for 6 Dalis / accessories - Dim: 1230x590x560mm - Weight: 36 Kg	
--------------	---	---

Accessories

CAL03	3 meter power cable (3G1,5 HO7RNF) with Neutrik PowerCon® True1 and CEE 7/7 (2P+T NF/SCHUKO) connectors - Poids: 0.55 Kg	
CAL05	Combined Neutrik PowerCon® True1 / DMX (5 pins) patch cable - length: 1m	
QR-SUS1	Dalis 860 "cradle" holder - Poids: 1.6 Kg	
QR-SUS2	Dalis 860 adjustable rigging kit (2 pieces)	
DMXcat	Bluetooth DMX/RDM Multifunction test tool - City Theatrical DMXcat®	
FC860/S	Flight-case for 6 Dalis / accessories - Poids: 36 Kg	
872	Doughty "Twenty clamp" with M10 screw/nut for Ø48 to 51mm pipes - SWL: 20Kg - TÜV approved - Poids: 0.25 Kg	
885	Doughty "Supaclamp" (black) with 16mm spigot hole for Ø50mm pipes max. - SWL: 20Kg - Poids: 0.45 Kg	
QR-MLA	Mini yoke with QuickRig connectors - Poids: 1.75 Kg	
QR-Pin	16mm QuickRig pin	
QR-Pin2	M10 QuickRig socket (without screw)	
QR-CS1	QuickRig safety cable Ø3mm L=600mm - SWL: 20 Kg	

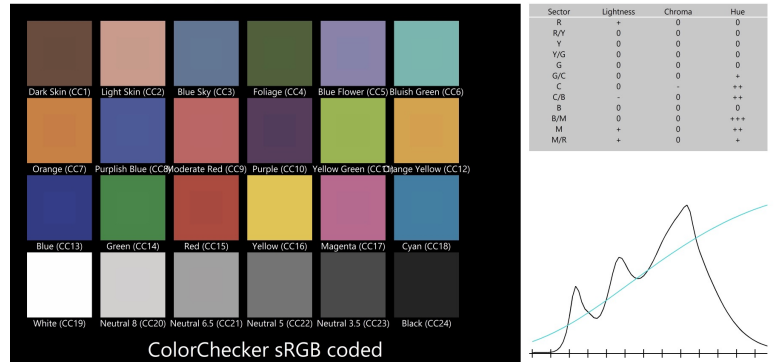
CCT	DeltaUV	CRI Ra	CRI R9	CQS Qa	TM30-18 Rf	TM30-18 Rg	TLCI
3 150K	-0.0004	95	83	96	94	102	90

CRI - CIE Colour Rendering Index

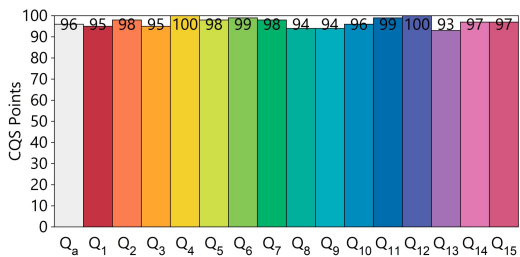


TLCI - Television Lighting Consistency Index

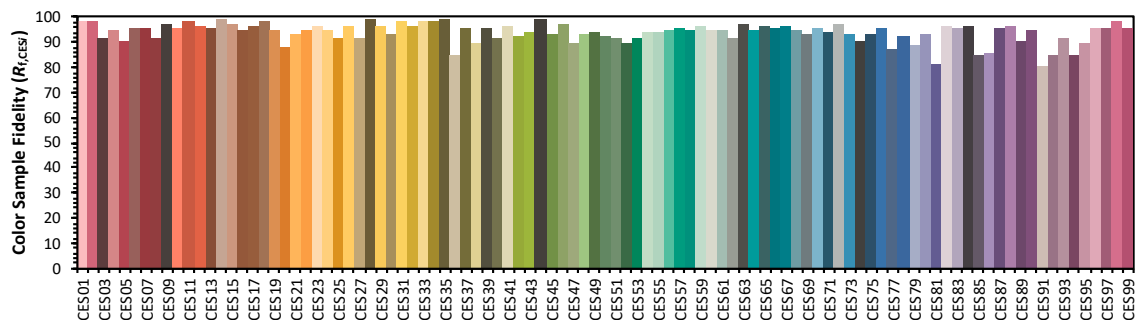
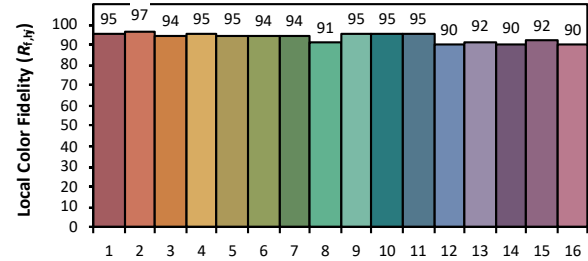
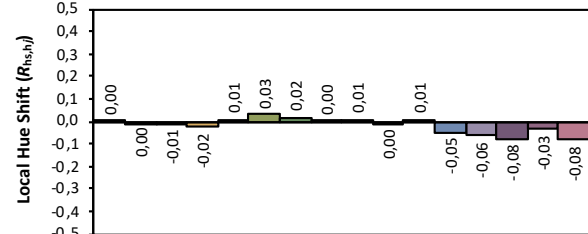
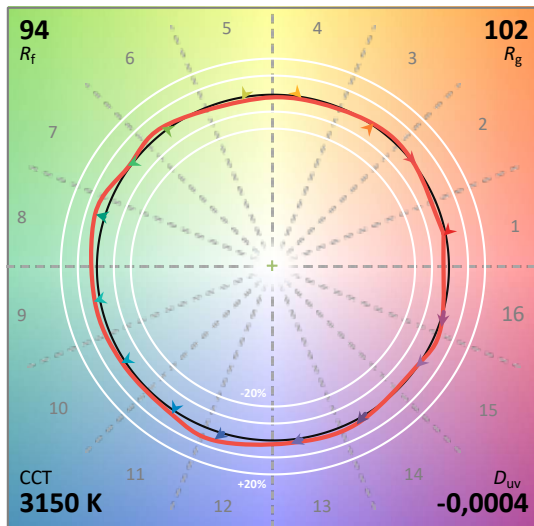
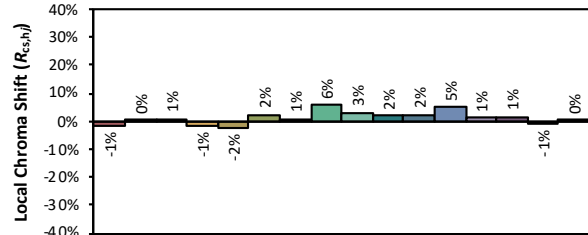
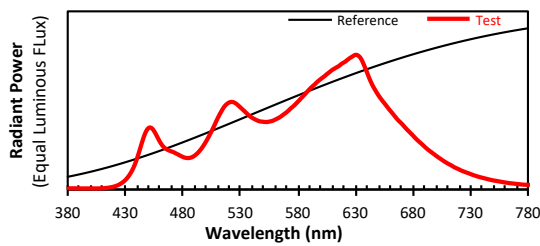
Test : CCT = P3150 (-0.1)
 TLCI-2012 : 90 (P3150)



CQS - NIST Colour Quality Scale



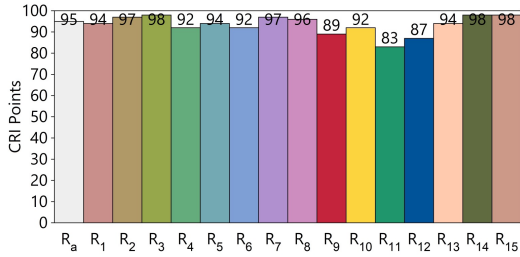
ANSI/IES TM-30-18 Colour Rendition Report



Colours are for visual orientation purposes only. Created with the IES TM-30-18 Calculator Version 2.00

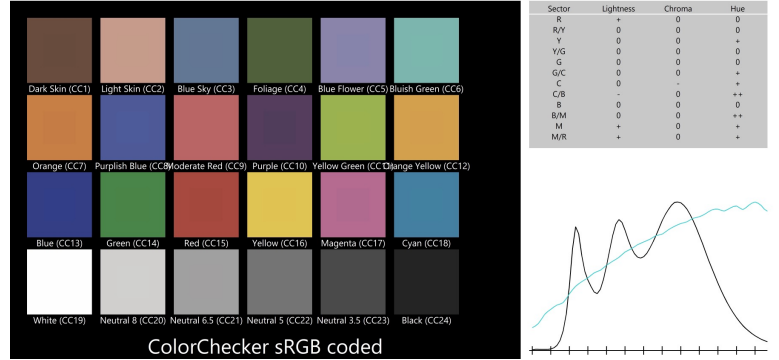
CCT	DeltaUV	CRI Ra	CRI R9	CQS Qa	TM30-18 Rf	TM30-18 Rg	TLCI
3 880K	-0.0007	95	89	96	93	102	91

CRI - CIE Colour Rendering Index

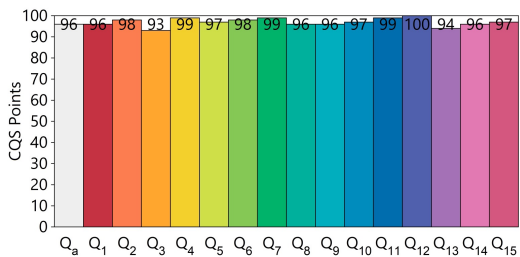


TLCI - Television Lighting Consistency Index

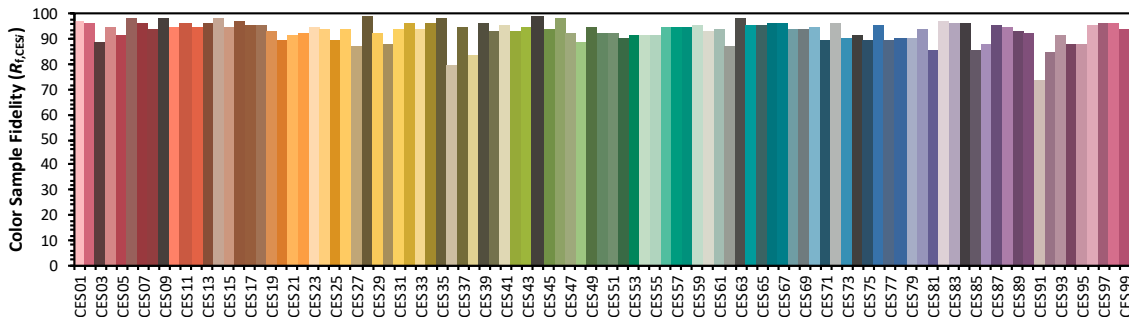
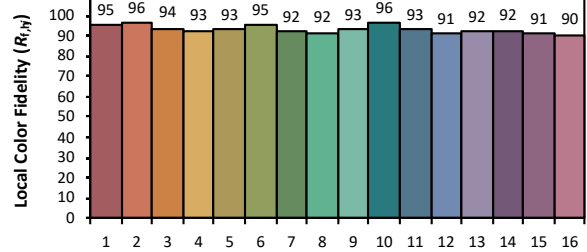
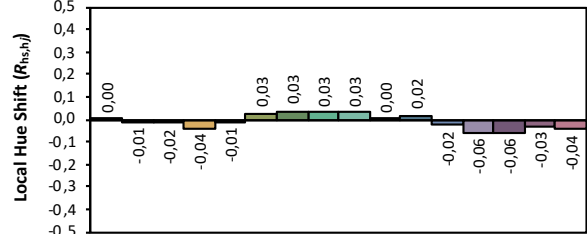
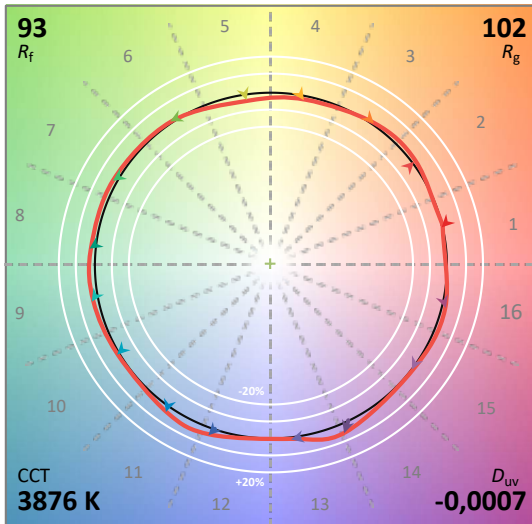
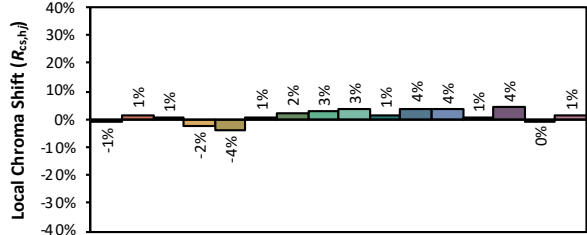
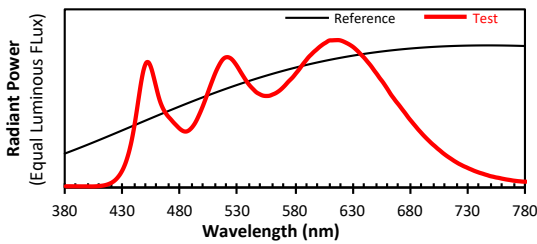
Test : CCT = M3876 (-0.1)
 TLCI-2012 : 91 (M3876)



CQS - NIST Colour Quality Scale



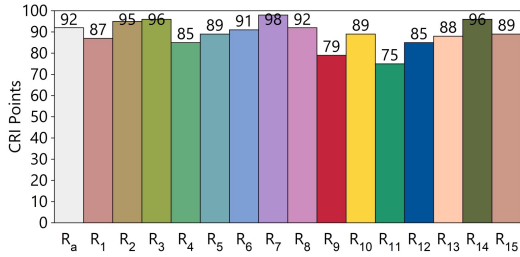
ANSI/IES TM-30-18 Colour Rendition Report



Colours are for visual orientation purposes only. Created with the IES TM-30-18 Calculator Version 2.00

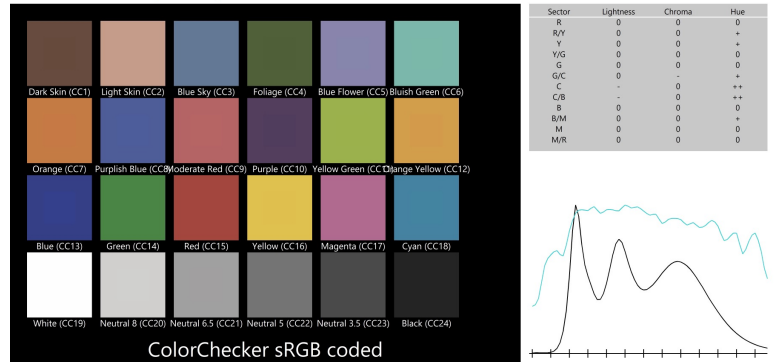
CCT	DeltaUV	CRI Ra	CRI R9	CQS Qa	TM30-18 Rf	TM30-18 Rg	TLCI
5 530K	-0.0009	92	79	95	92	105	91

CRI - CIE Colour Rendering Index

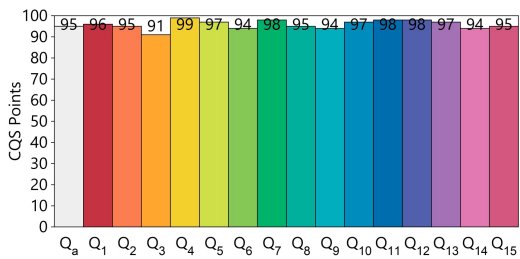


TLCI - Television Lighting Consistency Index

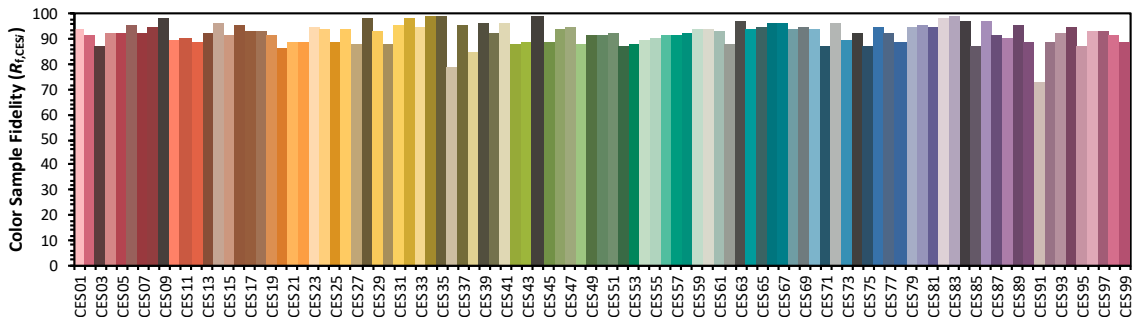
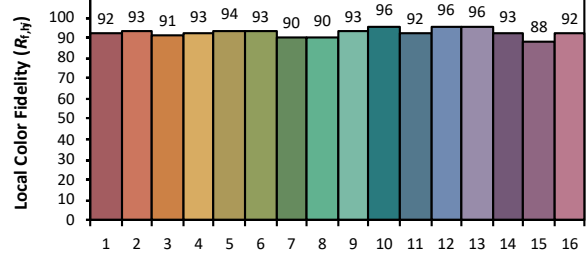
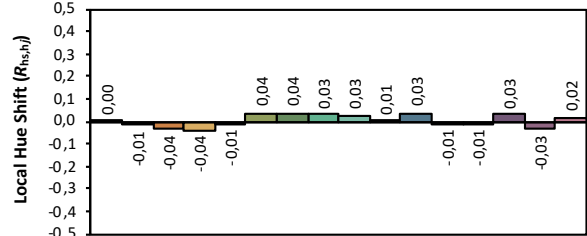
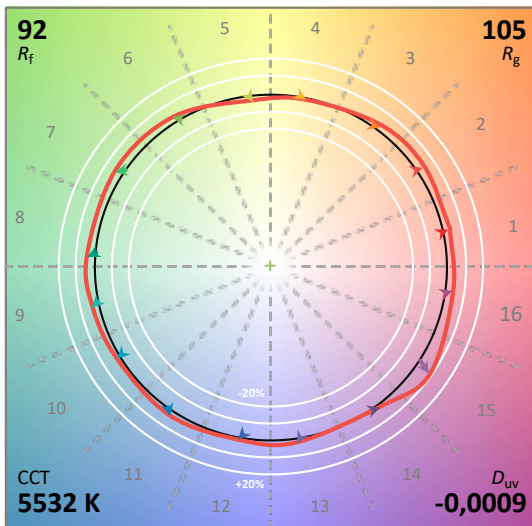
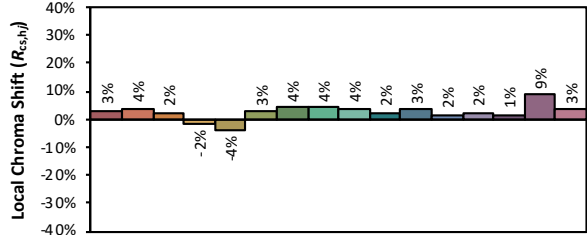
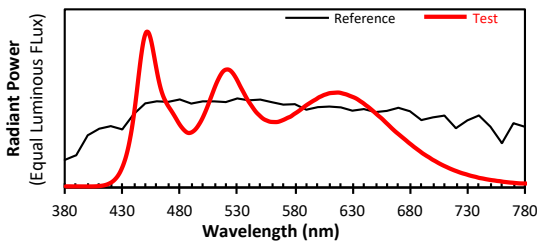
Test : CCT = D5532 (-0.8)
 TLCI-2012 : 91 (D5532)



CQS - NIST Colour Quality Scale



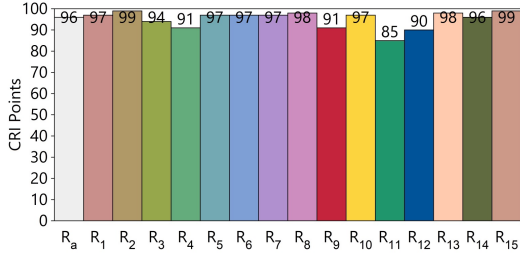
ANSI/IES TM-30-18 Colour Rendition Report



Colours are for visual orientation purposes only. Created with the IES TM-30-18 Calculator Version 2.00

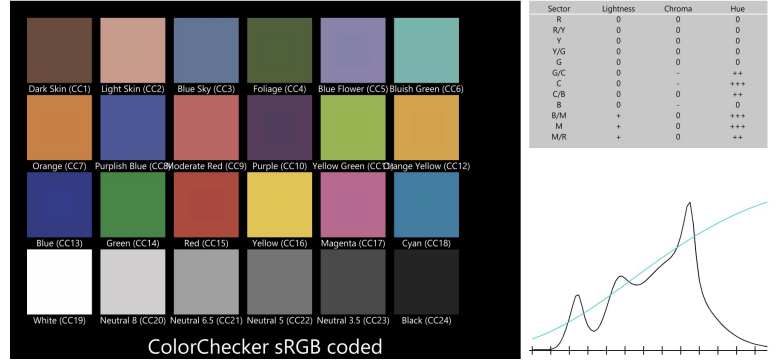
CCT	DeltaUV	CRI Ra	CRI R9	CQS Qa	TM30-18 Rf	TM30-18 Rg	TLCI
3 140K	-0.0001	96	91	96	94	104	88

CRI - CIE Colour Rendering Index

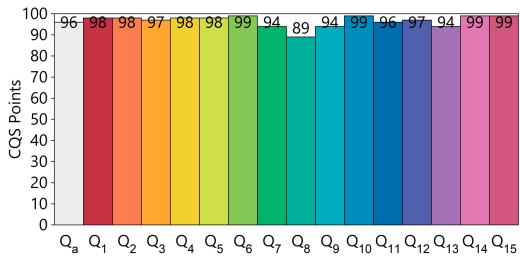


TLCI - Television Lighting Consistency Index

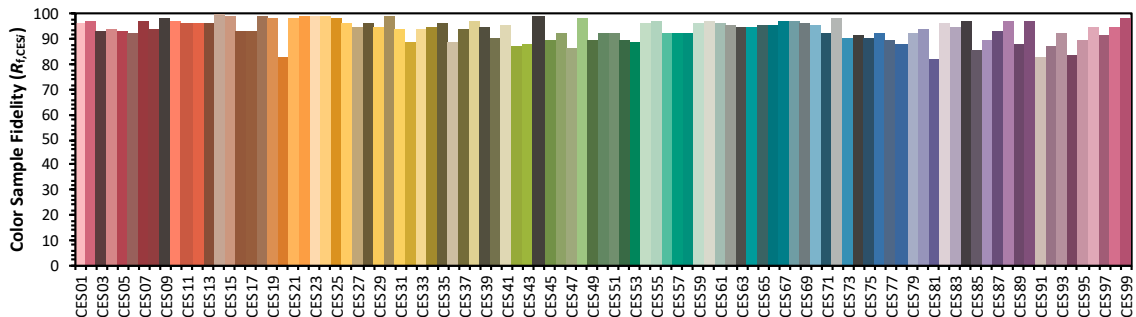
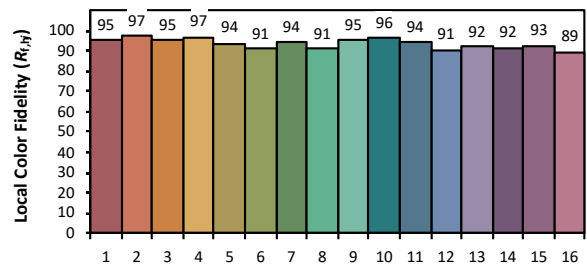
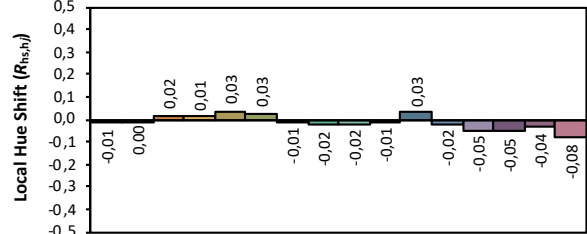
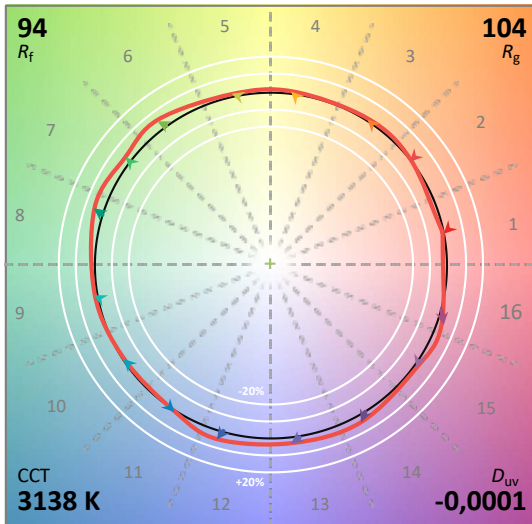
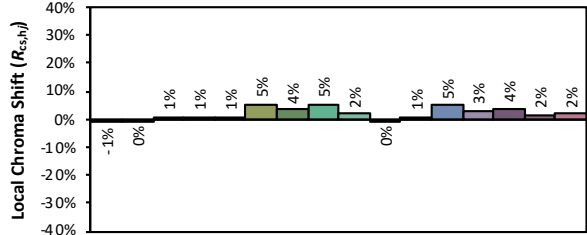
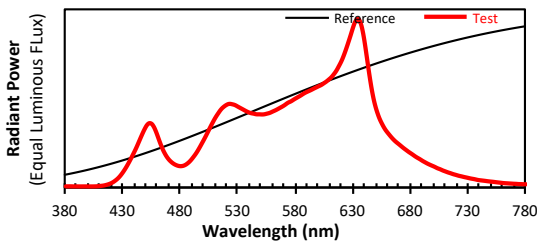
Test : CCT = P3138 (0.0)
 TLCI-2012 : 88 (P3138)



CQS - NIST Colour Quality Scale



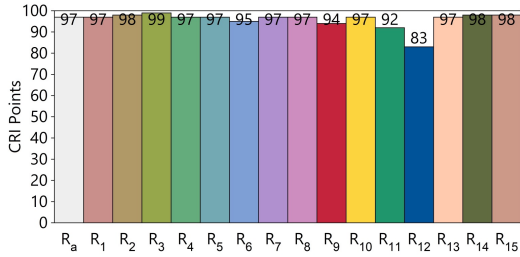
ANSI/IES TM-30-18 Colour Rendition Report



Colours are for visual orientation purposes only. Created with the IES TM-30-18 Calculator Version 2.00

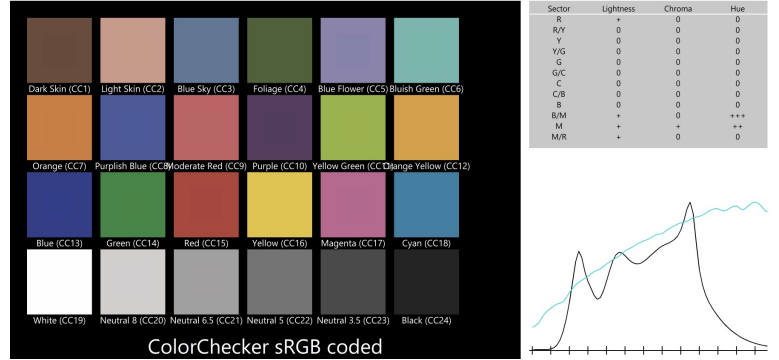
CCT	DeltaUV	CRI Ra	CRI R9	CQS Qa	TM30-18 Rf	TM30-18 Rg	TLCI
3 910K	-0.0003	97	94	97	93	100	93

CRI - CIE Colour Rendering Index

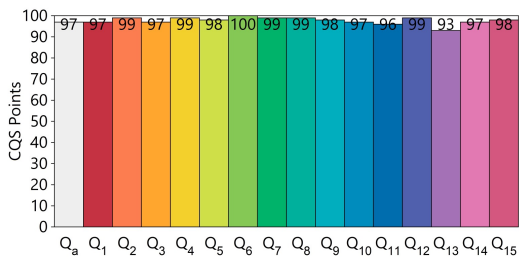


TLCI - Television Lighting Consistency Index

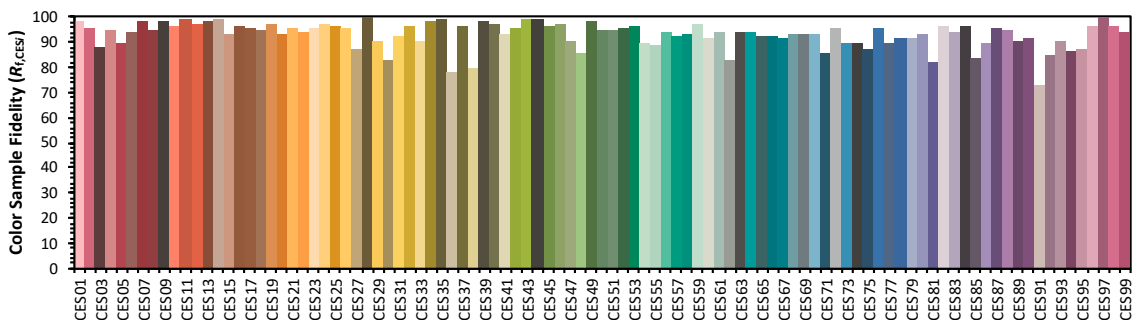
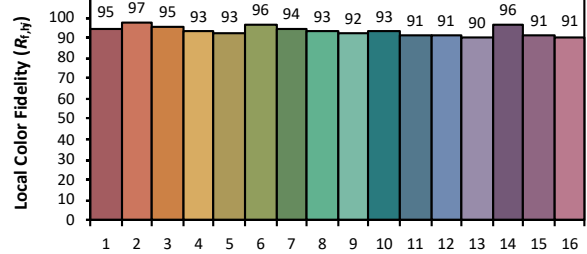
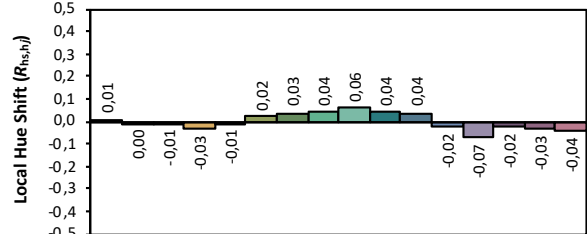
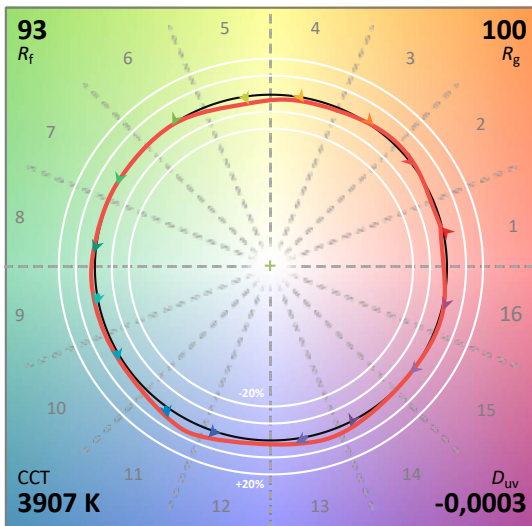
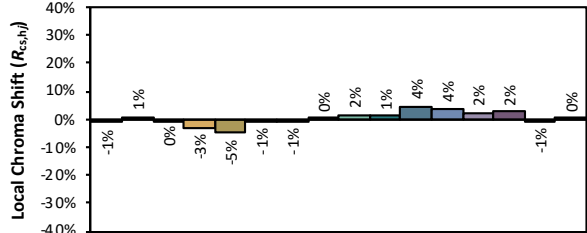
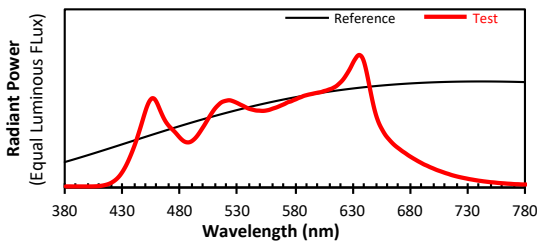
Test : CCT = M3907 (0.0)
 TLCI-2012 : 93 (M3907)



CQS - NIST Colour Quality Scale



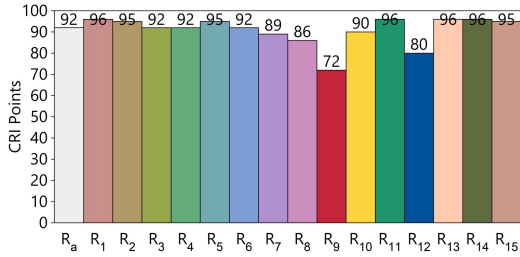
ANSI/IES TM-30-18 Colour Rendition Report



Colours are for visual orientation purposes only. Created with the IES TM-30-18 Calculator Version 2.00

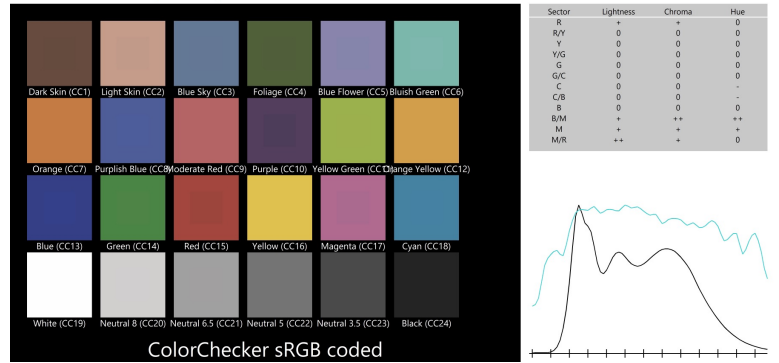
CCT	DeltaUV	CRI Ra	CRI R9	CQS Qa	TM30-18 Rf	TM30-18 Rg	TLCI
5 540K	-0.0010	92	72	93	90	96	92

CRI - CIE Colour Rendering Index

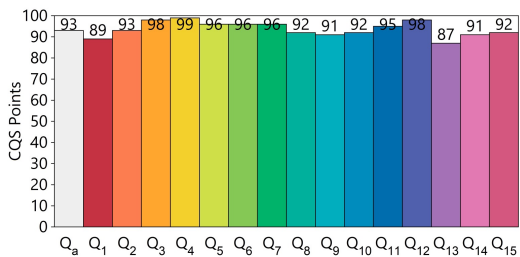


TLCI - Television Lighting Consistency Index

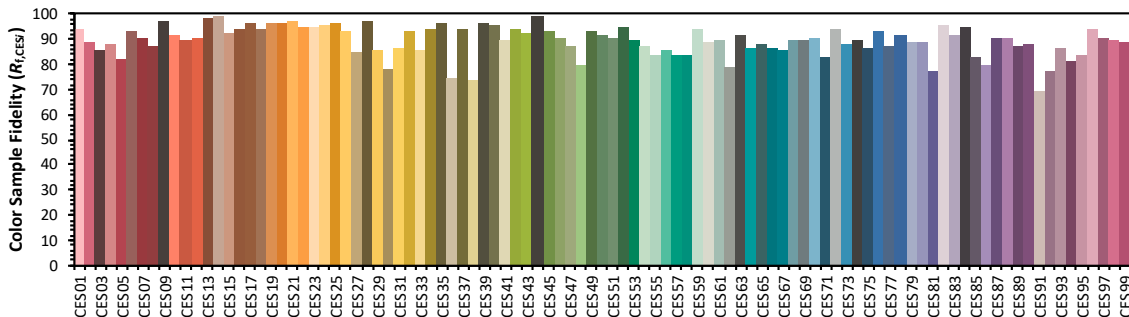
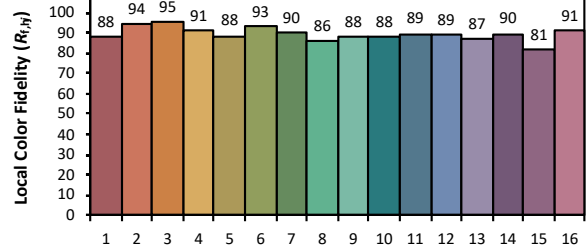
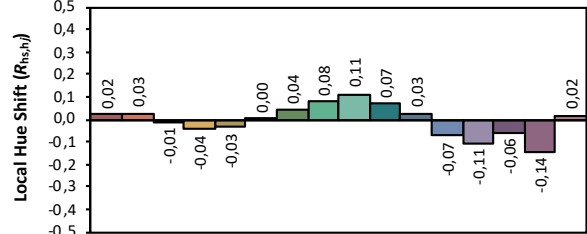
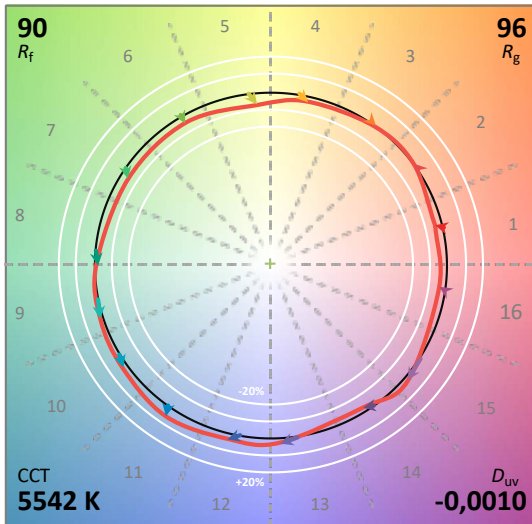
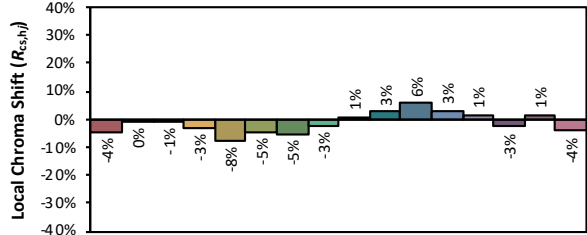
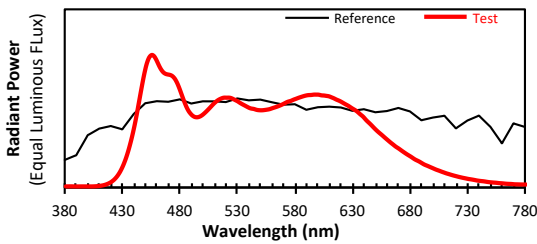
Test : CCT = D5541 (-0.8)
 TLCI-2012 : 92 (D5541)



CQS - NIST Colour Quality Scale



ANSI/IES TM-30-18 Colour Rendition Report



Colours are for visual orientation purposes only. Created with the IES TM-30-18 Calculator Version 2.00